

LOOP/MICKEY  
DINING CHAIR LOUNGE CHAIR

# India Mahdavi



Gebrüder Thonet Vienna renews their collaboration with India Mahdavi: for the second year in a row, the unmistakable style of the internationally renowned architect and designer meets the Austrian brand's emblematic curved lines, giving life to a new dining chair and lounge chair that will be on show at Salone del Mobile.

In response to the invitation of the historic company Gebrüder Thonet Vienna, India Mahdavi has extended the Loop family, which already included a lounge chair and a banquette presented in 2022, with a newly designed dining chair and a lounge chair, called Mickey for its characteristic "ears" that recall those of a mouse, a palpable echo to Mahdavi's "childhood heroes".

In the words of India Mahdavi,

**"The Mickey chair is high and comfy but also embracing, colourful and kind. A friend to cherish and with big ears, who listens to all your fears."**

To express the company's ancestral know-how, India Mahdavi stayed true to the motion, pursuing the line without lifting her pencil. This continuous thread, which acts as the Loop's structure, coils itself up to form the chair's articulation, leaving two loops bent in its wake. The seductive curls that characterise the Loop push the boundaries of possibility – India Mahdavi demands of the bent beech wood to double its efforts in order to amplify its beauty and roundness. In the new Loop dining chair, the seat upholstered in yellow wool harmoniously matches to the natural essence of the wooden structure, while the Mickey armchair combines a black wood structure in slight contrast with two different nuances of green upholstery, highlighting the piece's playful soul. "Gebrüder Thonet Vienna is the only manufacturer in the world that enables you to translate a free hand drawing by giving it a wooden materiality of that quality" says India Mahdavi.



# HAGU AB Concept, Ed Ng



Inspired by Gebrüder Thonet Vienna's rich history and commitment to exploring new trends and innovative technical solutions, Ed Ng, the founder of award-winning design and architecture practice AB Concept, has created the Hagu Chair.

**The name Hagu, which translates to "hug" in English, perfectly fits the chair design that feels as embracing as a cocoon.**

Together with AB Concept, Gebrüder Thonet Vienna sought to design a new chair to evolve its bentwood heritage while integrating a new material. The HAGU chair is equally at home in a residential or contract setting, including hospitality environments, offering something unexpected and fresh while expressing the brand's aesthetic values. Elegant, lightweight, refined, and comfortable even for extended periods, the chair features a slim metal frame that supports a plywood shell with an ergonomically angled, upholstered seat pad. The frame extends slightly further than the shell at the back, providing an intuitive yet invisible "handle" for the staff to pull out the chair for a guest in a restaurant setting.



# AMPLE Nichetto Studio



Nichetto Studio wanted to keep the art of steam bending typical of Gebrüder Thonet Vienna intact, this time not on wood but in a new material: metal.

**The result is Ample, a chair with a sinuous shape, a comfortable seat and backrest, ideal for both residential and contract use.**

Nichetto Studio has preserved the values of craftsmanship, tradition and innovation by creating a chair, Ample, whose sculptural beauty offers timeless elegance.



India Mahdavi

Architect, designer and scenographer, India Mahdavi lives and works in Paris. Created in 2000, her studio is known for the diversity of its international projects which explore the fields of architecture, interior design, scenography, furniture and object design - with a strong focus on craftsmanship and know-hows, as a way to strengthen ties between the hand, the mind, the heart and the eye. Aside from her celebrated environments and decors that all combine a modern sense of comfort and elegance with color and humor, Mahdavi is known for her own personal collection of furniture and objects and for engaging regularly into unique design collaborations - showing at every occasion what can be achieved when the finest French and European know-hows are made to serve the imagination. Polyglotte & polychrome, India Mahdavi has become a signature, elaborating special projects, released in Italy that is joyful, cosmopolitan

and elegant all at the same time - a cross-cultured 'art de vivre'. From The Gallery at Sketch in London to the Cavalino restaurant she designed for Ferrari in Maranello or the Hôtel du Clôtre in Arles, India Mahdavi's achievements in interior design are numerous. Aside from the collection she recently designed for Gebrüder Thonet Vienna, she has previously joined forces with famous brands - Louis Vuitton / Objets Nomades, Pierre Frey, La Manufacture Cogolin, Monoprix - and renowned galleries such as Nilufar in Milan and, most recently, Carwan in Athens. Named in Architectural Digest's Hall of Fame since 2019, Mahdavi won Frame Magazine's 2022 Lifetime Achievement Award and was named 2023 Designer of the Year by Wallpaper. The most emblematic realizations of the first twenty years of Mahdavi's personal career are highlighted and documented in her first eponymous monograph, released in 2021 with Chronicle Chroma.



AB Concept, Ed Ng

AB Concept is an international interior design and architecture studio founded in 1999 by Ed Ng and Terence Ngan. The studio's unique design approach draws similarities to how a chef develops a recipe, exploring local culture and experimenting with tastes and skills. This approach results in bespoke experiences through narrative-driven interiors with meticulous attention to detail, creating moments that matter in luxury environments across the hospitality, commercial, and residential sectors.

AB Concept works on a global scale with offices in Hong Kong, Taipei, Tokyo, London and Milan, serving clients in 16 countries and over 30 cities, from holiday destinations such as Algarve and Saint-Jean Cap-Ferrat to gateway cities like London, New York, Shanghai, and Tokyo. The studio collaborates closely with internationally-renowned hospitality, restaurant, and luxury brands, including Four Seasons, Ritz Carlton, Rosewood, Waldorf Astoria, and W Hotels. Recent projects include the acclaimed Paper Moon Giardino restaurant in Milan, L'Alque's flagship store in Shanghai, and the bar Argo at the Hong Kong Four Seasons, named one of the world's top 50 bars.

Ultimately, design is about being. In addition to spatial design, the studio continues to develop a portfolio of design products. To date, the studio has worked with Tai Ping on a capsule collection of couture rugs and hand-blown Bohemian glass lighting for Czech manufacturer Laxit. With a reputation for exceptional design projects and a commitment to innovation, AB Concept continues to explore what design can do, not what it looks like.



Luca Nichetto

Luca Nichetto founded his eponymous multidisciplinary design practice in Venice, Italy in 2006, specialising in industrial design, product design and design consultancy. From the very beginning, Nichetto Studio worked with a number of different brands and organisations; these collaborations were to become a cornerstone of his work and his influence had soon expanded far beyond Venice and Italy's borders. Fellow Treviso-born designer Francesco Dompieri joined the studio as a partner in 2007, and four years later, Nichetto opened a second studio in Stockholm, Sweden, catering to an ever growing number of requests for collaboration from international companies.

Soon, the studio's work was broadening out from its initial focus on designed objects. Today, the studio works with a variety of brands and clients from around the world and its expertise is sought out across all design disciplines. A deep passion for, and knowledge of, industrial and craft manufacturing processes runs through every aspect of the studio's work. Its projects abound in carefully selected cultural references and a keen attention to detail. The practice's unique position within both Scandinavian and Italian design culture has given Nichetto Studio worldwide acclaim that extends far beyond the confines of the design industry.

## Gebrüder Thonet Vienna GmbH

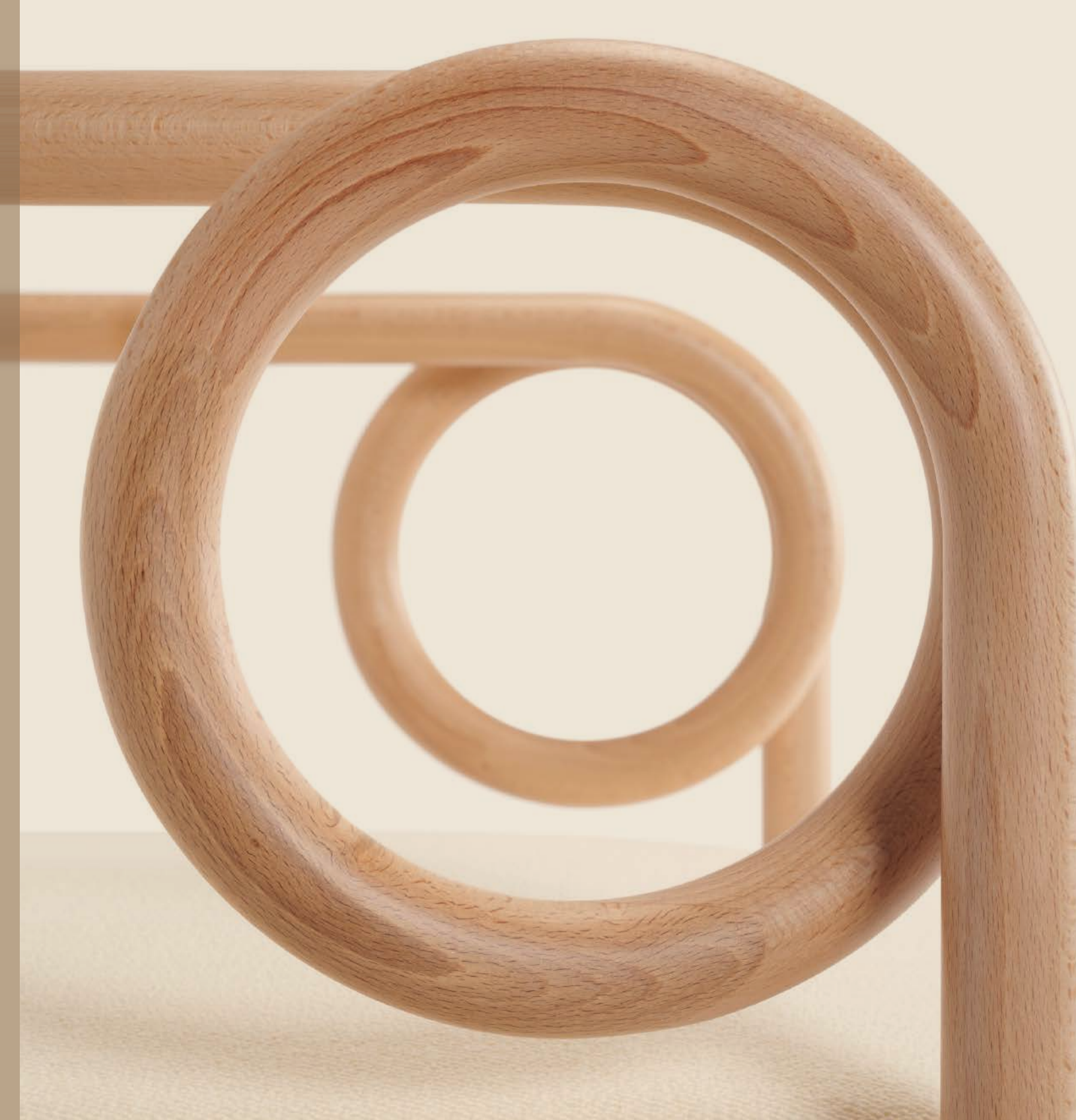
Part of a great European history that brings tradition and innovation together, renewing its style lines through continuous project research and protagonist in the critical passage from craftsmanship to industry, thanks to an approach which anticipates modern design, Thonet has contributed to the definition of the visual grammar of contemporaneity. Invited by Metternich to develop his own patent in Austria, Michael Thonet left Germany in 1842 and settled in Vienna, where he founded the "Gebrüder Thonet" company in 1853, involving his five children in the company. The steam bent wood technique allows the production of wood furniture on a larger scale, determining the product positioning on a global scale: in 1865 Ge-

brüder Thonet had 22 single-brand company stores throughout the world, with over 6,000 employees. In 1911, the company catalog contained 980 different products and at the end of the Second World War independent production units in various countries were created. In Austria, the home market of Gebrüder Thonet, the business was rebuilt by descendants of Michael Thonet, including his great-grandson Fritz Jakob Thonet as well as Fritz Jakob's children Evamarie Thonet and Richard Thonet. After the war, they had to start from scratch, with little more than their experience and passion for furniture. They recommenced their business in one of Gebrüder Thonet's former warehouses in Vienna. From 1948 they rented a production site in Rohrau, Steier-

mark, before they finally built their own production site in Friedberg in 1962. In 1976 the company changed its name to Gebrüder Thonet Vienna. Now the company is renewing its partnership with the world of design, planning a new phase in its history working alongside designers that make research one of the distinctive traits of their creative path. This corporate vision confirms Gebrüder Thonet Vienna's calling for design research, forging a link between its past and its future, with the aim of continuing, with innovation, on the road mapped out by tradition. Gebrüder Thonet Vienna GmbH is a property of Moschini Spa since before 2003. All the products made by Gebrüder Thonet Vienna bear the new Wiener GTV design trademark.



Heritage designs the future.  
Collection 2023



Gebrüder Thonet Vienna GmbH  
Prinz Eugen Strasse 42 - 1040 Wien, (AT)  
www.gebruederthonetvienna.com  
Offices of the trademarks licensee  
Production Furniture International S.p.A.  
Via Fuggia 2/9M - 10102 Torino (TO) Italy  
Phone: 0039 011 0133330  
info@gebruederthonetvienna.com  
@gebrueder\_thonet\_vienna



# CHAIRS & ARMCHAIRS

## AMPLE NICOLETTE STUDIO, 2023 NEW 2023

Chair with tubular metal frame and seat and back. The seats available in wood or upholstered.



SOMAPLON  
mm. H 80 | W 52 | D 50



SOMAPTES  
mm. H 78 | W 52 | D 50

## BEAULICU PHILIPPE NGUYEN, 2021

Bent birch-wood chair and armchair available with plywood or upholstered seat.



SREKALON  
mm. H 76 | W 51 | D 53



PIREALTES  
mm. H 75 | W 51 | D 53

## BISTROTSTUHL NICOLE COATES, 2016

Bent birch-wood armchair with upholstered or plywood seat.



PIREELON  
mm. H 77 | W 51 | D 50

## BOODYSTUHL NICOLE COATES, 2015

Bent birch-wood chair. Available in 3 versions: woven cane seat and backrest, upholstered seat and backrest, upholstered seat and woven cane backrest.



SLEINERG  
mm. H 80 | W 51 | D 50



SLEINERTS  
mm. H 80 | W 51 | D 50

## BÖZCEL LUCCIO PEREIRE, 2014

Bent birch-wood armchair with upholstered seat.



PIREZTES  
mm. H 77 | W 51 | D 54

## CAFESTUHL NICOLE COATES, 2016

Bent birch-wood chair with upholstered or plywood seat.



SREKATES  
mm. H 81 | W 51 | D 50

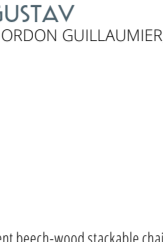
## CZECH HERMANN CZECH, 1994



SREZELON  
mm. H 82 | W 42 | D 52



PIREZTES  
mm. H 82 | W 42 | D 52



SREZELON  
mm. H 78 | W 51 | D 52



SREZELON  
mm. H 78 | W 51 | D 52

## HAGU AB CONCEPT - ED NG, 2023 NEW 2023

Armchair with tubular metal frame and multiple backrest elements with an inside and outside. The seat is upholstered.



PIREKATES  
mm. H 76 | W 54 | D 58



SREZELON  
mm. H 82 | W 51 | D 52



SREZELON  
mm. H 82 | W 51 | D 52



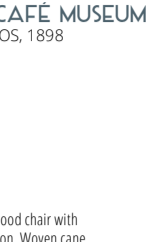
PIREZTES  
mm. H 82 | W 51 | D 52

## LOOP DINING CHAIR INDIA MAHAWAY, 2023 NEW 2023

Bent birch-wood dining chair with upholstered seat and wooden backrest.



PIREKATES  
mm. H 72 | W 42 | D 54



SREZELON  
mm. H 82 | W 51 | D 52



SREZELON  
mm. H 82 | W 51 | D 52

## MAGISTRETTI 0301 VICO MAGISTRETTI, 2003

Bent birch-wood armchair. Bent plywood shell, also available with saddle leather covering.



SREKALON  
mm. H 78 | W 51 | D 50



PIREKATES  
mm. H 81 | W 51 | D 50

## MORRIS GAMFRATESI, 2015



SREKALON  
mm. H 102 | W 42 | D 50



SREKALON  
mm. H 80 | W 42 | D 80



SREKALON  
mm. H 81 | W 51 | D 51



SREKALON  
mm. H 81 | W 51 | D 51

## N O FRONT, 2017

Bent birch-wood chair with 1 armrest, upholstered seat and backrest, woven cane seat or backrest. Also available with 2 armrests or without armrests.



SREKALON  
mm. H 81 | W 51 | D 51



SREKALON  
mm. H 81 | W 51 | D 51



SREKALON  
mm. H 81 | W 51 | D 51



SREKALON  
mm. H 81 | W 51 | D 51

## N 14 MICHAEL THONET, 1860

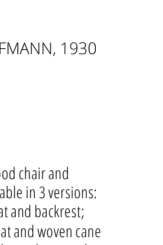
Bent birch-wood chair. Seat available in woven cane, plywood, perforated plywood or upholstered. Also available in the special version ANTIKALON with ring-shaped backrest and woven cane seat.



SREKALON  
mm. H 82 | W 42 | D 40



SREKALON  
mm. H 82 | W 42 | D 40



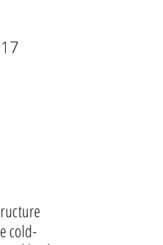
SREKALON  
mm. H 82 | W 42 | D 40

## N 18 GERBERUDER THONET, 1876

Bent birch-wood chair. Plywood or upholstered seat available.



SREKALON  
mm. H 82 | W 42 | D 40



SREKALON  
mm. H 82 | W 42 | D 40



SREKALON  
mm. H 82 | W 42 | D 40

## POST MUNDUS MARTINO GAMPER, 2012



SREKALON  
mm. H 82 | W 42 | D 54



SREKALON  
mm. H 82 | W 42 | D 54



SREKALON  
mm. H 78 | W 51 | D 53



SREKALON  
mm. H 78 | W 51 | D 53

## POSTSPARKASSE OTTO WAGNER, 1906

Bent birch-wood armchair. With perforated plywood or upholstered seat. Only available with aluminum details.



SREKALON  
mm. H 78 | W 51 | D 53



SREKALON  
mm. H 78 | W 51 | D 53



SREKALON  
mm. H 78 | W 51 | D 53



SREKALON  
mm. H 78 | W 51 | D 53

## RADETSKY MICHAEL LUXICH, 2015

Bent birch-wood chair with upholstered or plywood seat.



SREKALON  
mm. H 80 | W 51 | D 50



SREKALON  
mm. H 80 | W 51 | D 50



SREKALON  
mm. H 80 | W 51 | D 50

## SÖLDEN GERBERUDER THONET VIENNA GABRIEL ETY, 2020

Bent birch-wood chair. Upholstered seat and woven cane backrest. Also available with Canaletto without structure.



SREKALON  
mm. H 80 | W 51 | D 50



SREKALON  
mm. H 80 | W 51 | D 50



SREKALON  
mm. H 80 | W 51 | D 50

## SUGILOO MICHAEL ANASTASSIADES, 2020

Bent birch-wood chair and armchair available in plywood seat or upholstered seat with plywood backrest.



SREKALON  
mm. H 82 | W 51 | D 54



SREKALON  
mm. H 82 | W 51 | D 54



SREKALON  
mm. H 82 | W 51 | D 54

## TWIGGY GERBERUDER THONET VIENNA GABRIEL ETY, 2006

Chair and armchair in saddle leather with steel structure. Upholstered seat and backrest.



SREKALON  
mm. H 84 | W 44 | D 43



SREKALON  
mm. H 84 | W 44 | D 43



SREKALON  
mm. H 84 | W 44 | D 43

## VIENNA 144 GERBERUDER THONET, 1908



SREKALON  
mm. H 84 | W 44 | D 43



SREKALON  
mm. H 84 | W 44 | D 43



SREKALON  
mm. H 84 | W 44 | D 43



SREKALON  
mm. H 84 | W 44 | D 43

## WIENER STUHL GERBERUDER THONET, 1904

Bent birch-wood armchair. Woven cane, plywood, perforated plywood, upholstered seat or upholstered seat and backrest. The frames also available in the special version: metal frame and suspended seat with woven cane backrest (colorful).



SREKALON  
mm. H 82 | W 51 | D 50



SREKALON  
mm. H 82 | W 51 | D 50



SREKALON  
mm. H 82 | W 51 | D 50



SREKALON  
mm. H 82 | W 51 | D 50

## LOUNGE CHAIRS & SOFAS



SREKALON  
mm. H 82 | W 51 | D 50



SREKALON  
mm. H 82 | W 51 | D 50



SREKALON  
mm. H 82 | W 51 | D 50

## LOUNGE, 2019 SREKALON

Sofa in 3 sizes and lounge chair with bent birch-wood frame and woven cane decorative elements. Fully removable cover. Upholstered seat with different density polyurethane foam filling, covered with acrylic fiber fabric. Custom made of polyurethane memory foam.



SREKALON  
mm. H 82 | W 170 | D 80



SREKALON  
mm. H 82 | W 170 | D 80



SREKALON  
mm. H 82 | W 170 | D 80

## LOIE CHARRA ANDREATTI, 2018



SREKALON  
mm. H 84 | W 70 | D 74



SREKALON  
mm. H 84 | W 70 | D 74



SREKALON  
mm. H 84 | W 70 | D 74



SREKALON  
mm. H 84 | W 70 | D 74

## LOOP INDIA MAHAWAY, 2022

Bent birch-wood lounge chair and backrest with upholstered seat and back. The other backrests fully removable.



SREKALON  
mm. H 72 | W 42 | D 54



SREKALON  
mm. H 72 | W 42 | D 54



SREKALON  
mm. H 72 | W 42 | D 54



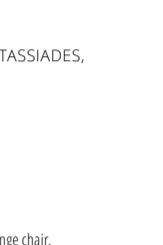
SREKALON  
mm. H 72 | W 42 | D 54

## LUFTBALLONS GERBERUDER THONET VIENNA GABRIEL ETY, 2020 (DESIGN DEPT.)

Sofa in 2 sizes and lounge chair with bent birch-wood frame and woven cane decorative elements. Fully removable cover. Upholstered seat with different density polyurethane foam filling, covered with acrylic fiber fabric. Custom made of polyurethane memory foam.



SREKALON  
mm. H 72 | W 150 | D 80



SREKALON  
mm. H 72 | W 150 | D 80



SREKALON  
mm. H 72 | W 150 | D 80

## MICKEY INDIA MAHAWAY, 2023 NEW 2023

Bent birch-wood lounge chair. Upholstered seat and backrest with different density polyurethane foam filling.



SREKALON  
mm. H 72 | W 150 | D 75



SREKALON  
mm. H 72 | W 150 | D 75



SREKALON  
mm. H 72 | W 150 | D 75

## SCHAUKELSTUHL GERBERUDER THONET, 1885



SREKALON  
mm. H 104 | W 70 | D 104



SREKALON  
mm. H 104 | W 70 | D 104



SREKALON  
mm. H 104 | W 70 | D 104



SREKALON  
mm. H 104 | W 70 | D 104

## SUZENNE CHARRA ANDREATTI

Lounge chair and two-person sofa with bent birch-wood frame. Generous seat cushions and upholstered backrest with woven cane inserts.



SREKALON  
mm. H 82 | W 150 | D 78



SREKALON  
mm. H 82 | W 150 | D 78



SREKALON  
mm. H 82 | W 150 | D 78



SREKALON  
mm. H 82 | W 150 | D 78

## TARQA GAMFRATESI, 2015

Sofa in 2 sizes and lounge chair with bent birch-wood frame and woven cane decorative elements. Seat and backrest with different density polyurethane foam filling, covered with acrylic fiber fabric. Also available with brass feet.



SREKALON  
mm. H 72 | W 150 | D 80



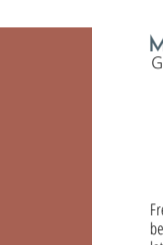
SREKALON  
mm. H 72 | W 150 | D 80



SREKALON  
mm. H 72 | W 150 | D 80

## DEBATES / DUJANETS SREKALON

Sofa in 2 sizes and lounge chair with bent birch-wood frame and woven cane decorative elements. Seat and backrest with different density polyurethane foam filling, covered with acrylic fiber fabric. Also available with brass feet.



SREKALON  
mm. H 72 | W 150 | D 80



SREKALON  
mm. H 72 | W 150 | D 80



SREKALON  
mm. H 72 | W 150 | D 80