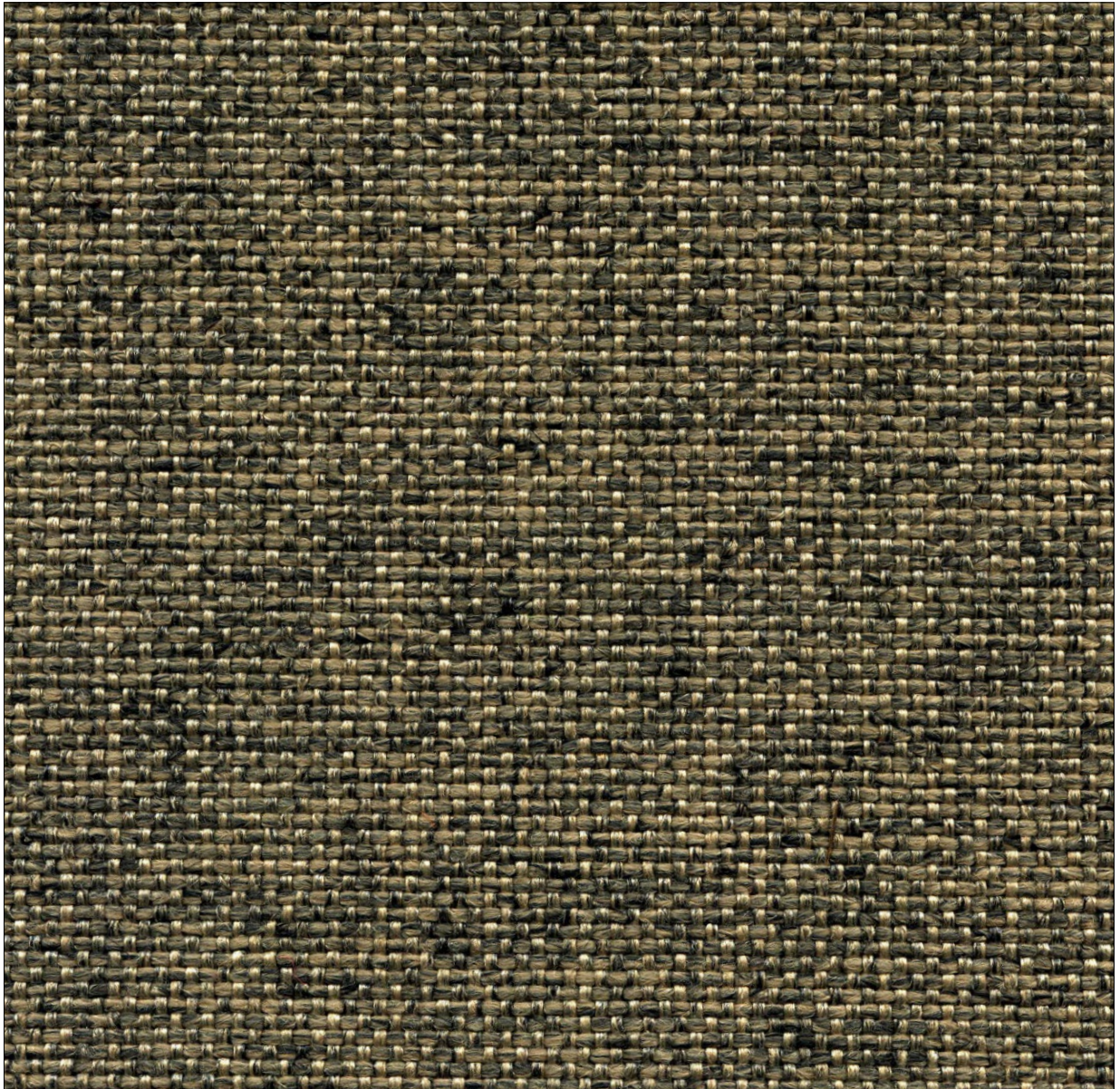


Trevi A3000

cat.B



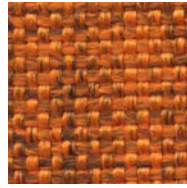


3564

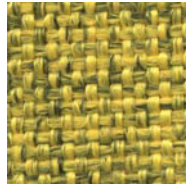
Trevi A3000



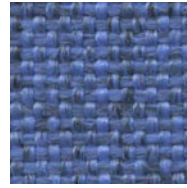
3564



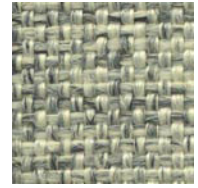
3111



3053



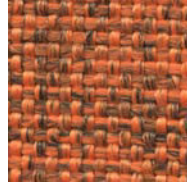
3316



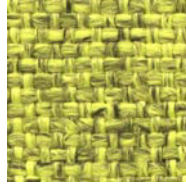
3503



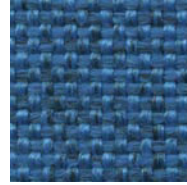
3066



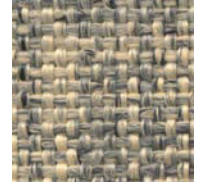
3113



3063



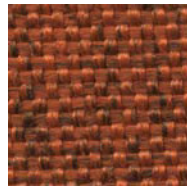
3315



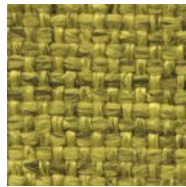
3505



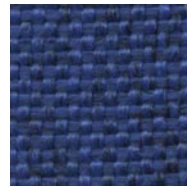
3556



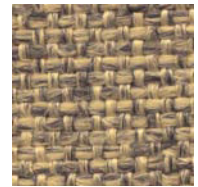
3109



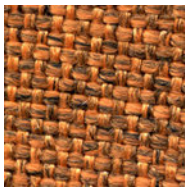
3062



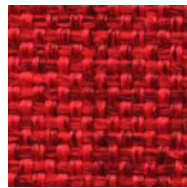
3317



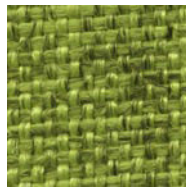
3509



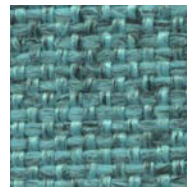
3118



3216



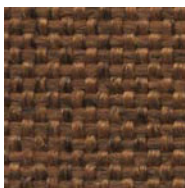
3493



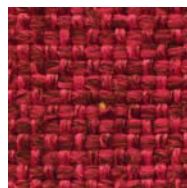
3432



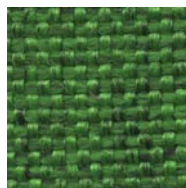
3999



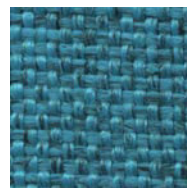
3558



3265



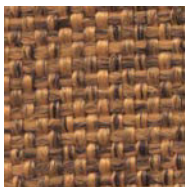
3494



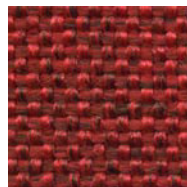
3418



3622



3565



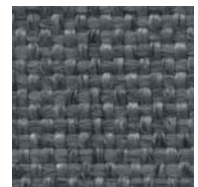
3217



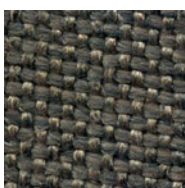
3495



3433



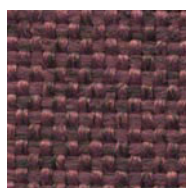
3620



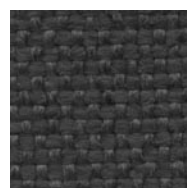
3567



3262



3260



3626



3623


Trevi A3000












Tela ad effetto melange tinto in pezza di facile utilizzo sia come tessuto singolo che in coordinato con tessuti e velluti della ns. collezione.

Piece dyed canvas with melange effect and easy use both as single fabric and co-ordinated with fabrics and velvets of our production.



Composizione	100% Poliestere FR (Tr Cs)	
Peso	gr/mtl 630 ± 5%	
Altezza	cm 140 ± 2%	
Lunghezza pezza	mt 50 ± 5%	
Abrasiono	(Martindale) UNI EN ISO 12947:2000 100.000 cicli ± 20%	
Solidità alla luce	(Xenotest) UNI EN ISO 105 B02 6 ± 1	
Certificati di Resistenza al fuoco	Classe 1 Sipari, Drappeggi, Tendaggi e Rivestimento Pareti Classe 1 IM - Rapporto di Prova M1 BS 5852 Crib 5 using a CM Foam 35 kg/cu.m. B1 DIN 4102 EN 1021 Part.1-2 using a CM Foam 35 kg/cu.m. EN 13501-1 ¹² : B-s1, d0 Calif. Bull. 117 June 2013 art. Azimut: MED/3.19 MED/3.21 - Draperies, Curtains and Bedding components MED Annex A.1 item: A.1/3.20 - Upholstered furniture FAR.25853 Classification: yes	  
Manutenzione	Usare con regolarità l'aspirapolvere a beccuccio liscio, senza spazzolare.	    
Differenze di colore	Leggere differenze di colore fra una partita e l'altra sono da considerarsi normali.	

Composition	100% Polyester FR (Tr Cs)	
Weight	gr/lm 630 ± 5%	
Width	cm 140 ± 2%	
Piece Length	lm 50 ± 5%	
Abrasion Test	(Martindale) UNI EN ISO 12947:2000 100.000 turns ± 20%	
Lightfastness	(Xenotest) UNI EN ISO 105 B02 6 ± 1	
Flammability Certificates	Classe 1 Sipari, Drappeggi, Tendaggi e Rivestimento Pareti Classe 1 IM - Rapporto di Prova M1 BS 5852 Crib 5 using a CM Foam 35 kg/cu.m. B1 DIN 4102 EN 1021 Part.1-2 using a CM Foam 35 kg/cu.m. EN 13501-1 ¹² : B-s1, d0 Calif. Bull. 117 June 2013 art. Azimut: MED/3.19 MED/3.21 - Draperies, Curtains and Bedding components MED Annex A.1 item: A.1/3.20 - Upholstered furniture FAR.25853 Classification: yes	  
Care Instructions	Use the vacuum-cleaner with smooth spout regularly, don't brush.	    
Colour Matching	Slight differences between dyeing lots are considered normal.	

Gebrüder Thonet Vienna GmbH (GTV)
Prinz Eugen Straße 42
1040 Wien, (Austria)
Offices of the trademarks' licensee
Production Furniture International S.p.A
Via Foggia, 23/H - 10152 Torino Italy

www.gebruederthonetvienna.com