

Atom	Cat. E
Canvas 2	Cat. C
Coda 2	Cat. D
Divina 3	Cat. C
Fuse	Cat. D
Harald 3	Cat. C
Hero	Cat. B
Moss	Cat. C
Pilot	Cat. D
Raas	Cat. C
Relate	Cat. B
Safire	Cat. C
San	Cat. C
Savanna	Cat. B
Steelcut 2	Cat. C
Steelcut Trio 3	Cat. C
Twill Weave	Cat. C
Vidar 4	Cat. C
Zero	Cat. C
Campas 300	only for Feng



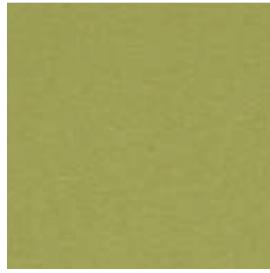
SAHCO

kvadrat





Hero by Kvadrat
Col. 201



Hero by Kvadrat
Col. 441



Hero by Kvadrat
Col. 601



Steelcut Trio 3 by Kvadrat
Col. 686



San by Kvadrat
Col. 430



Moss by Sahco
Col. 012



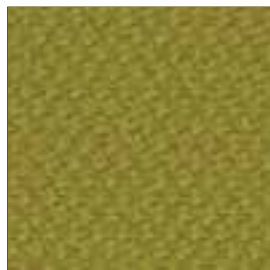
Steelcut Trio 3 by Kvadrat
Col. 645



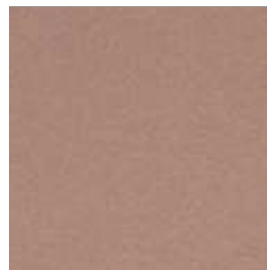
San by Kvadrat
Col. 580



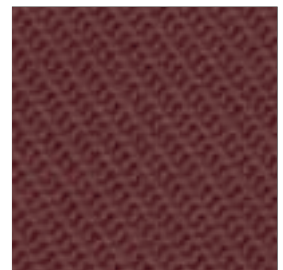
Savanna by Kvadrat
Col. 442



Steelcut 2 by Kvadrat
Col. 435



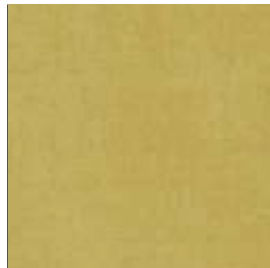
Hero by Kvadrat
Col. 511



Twill Weave by Kvadrat
Col. 570



Safire by Sahco
Col. 015



Harald 3 by Kvadrat
Col. 443



Relate by Kvadrat
Col. 431



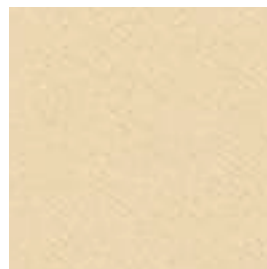
Relate by Kvadrat
Col. 561



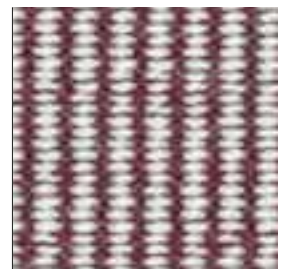
Moss by Sahco
Col. 022



Twill Weave by Kvadrat
Col. 430



Campas 300 by Kvadrat
Col. 234



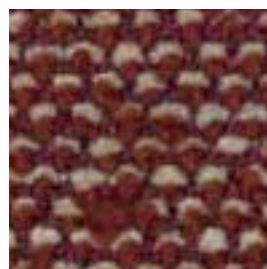
Fuse by Kvadrat
Col. 631



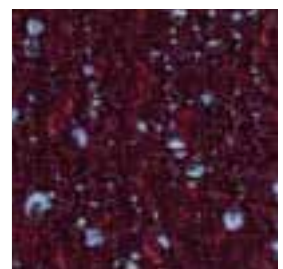
Safire by Sahco
Col. 016



Zero by Sahco
Col. 008



Safire by Sahco
Col. 013



Pilot by Kvadrat
Col. 582



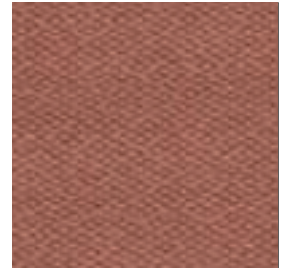
Raas by Kvadrat
Col. 642



Canvas 2 by Kvadrat
Col. 614



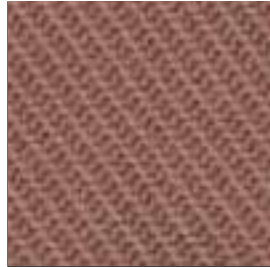
San by Kvadrat
Col. 350



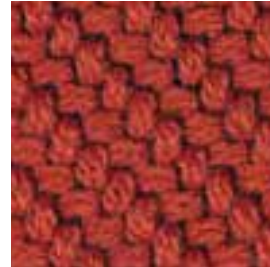
San by Kvadrat
Col. 540



Harald 3 by Kvadrat
Col. 582



Twill Weave by Kvadrat
Col. 530



Coda 2 by Kvadrat
Col. 610



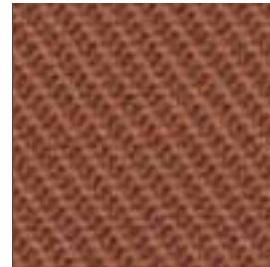
Raas by Kvadrat
Col. 552



Vidar 4 by Kvadrat
Col. 693



Campas 300 by Kvadrat
Col. 684



Twill Weave by Kvadrat
Col. 550



Harald 3 by Kvadrat
Col. 512



Raas by Kvadrat
Col. 662



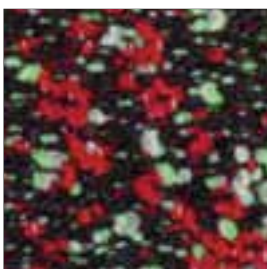
Twill Weave by Kvadrat
Col. 280



Campas 300 by Kvadrat
Col. 554



Divina 3 by Kvadrat
Col. 584



Atom by Kvadrat
Col. 574



Vidar 4 by Kvadrat
Col. 582



Divina 3 by Kvadrat
Col. 671

Atom by Kvadrat Raf Simons Cat. E

Application Offices, hotels, institutions, domestic use. Great durability.
Description 90% new wool, worsted, 8% nylon, 2% polyester. Width 59 inches (150 cm). Weight app. 1060 g/lin.m. Yarn dyed. Colour differences may occur.
Abrasion: App. 65,000 rubs acc. to the Martindale method EN ISO 12947.
Lightfastness (ISO) 7. Pilling (EN ISO) 4. Fastness to rubbing (ISO) dry 4-5, wet 3-5. Flame resistance: AS/NZS 1530.3. BS 5852 Crib 5 with treatment. BS 5852 ignition source 3. BS 5852 part 1. EN 1021-1/2. IMO FTP Code 2010:Part 8. NF D 60 013. SN 198 898 5.3 with treatment. UNI 9175 11M. US Cal. Bull. 117-2013. ÖNORM B1 / Q1. (Copy of test report available).
Care Please see www.kvadrat.dk/care-and-maintenance.

Divina 3 by Kvadrat Finn Sködt Cat. C

Application Offices, hotels, institutions, domestic use.
Description 100% new wool. Width app. 59 inches (150 cm). Weight app. 840 g/lin.m. Piece dyed. Foreign fibres may occur in light colours. Colour differences may occur.
Abrasion: App. 45,000 rubs acc. to the Martindale method EN ISO 12947.
Lightfastness (ISO) 5-7. Pilling (EN ISO) 3. Fastness to rubbing (ISO) dry 4-5, wet 3-5. Sound absorption (EN ISO 354) 0.60/Class C (flat), 0.70/Class C (waved). Airflow 678 Pa s/m. Flame resistance: AS/NZS 1530.3. ASTM E84 Class A adhered. ASTM E84 Class B unadhered. BS 5852 Crib 5. BS 5852 Part 1. BS 5867 Part 2 Type B. EN 1021-1/2. EN 13501, C-s1, d0 adhered. GB 50222 B1 with treatment. IMO FTP Code 2010:Part 8. NF D 60 013. NFPA 260. NFPA 701 with treatment. SN 198 898 5.3 with treatment. UNI 9175 11M. US Cal. Bull. 117-2013. ÖNORM B1 / Q1. (Copy of test report available).
Care Please see www.kvadrat.dk/care-and-maintenance.

Safire by Sahco Cat. C

Application Upholstery
Description 43% viscose, 17% acrylic, 15% new wool, 9% cotton, 8% linen, 8% polyester. Width app. 55 inches (140 cm). Weight app. 1010 g/lin.m. Colour differences may occur.
Abrasion: App. 40,000 rubs acc. to the Martindale method EN ISO 12947. Shrinkage app. 2%. **Lightfastness (ISO) 6. Pilling (EN ISO) 3. Flame resistance:** BS 5852 Crib 5 with treatment. BS 5852 part 1. EN 1021-1/2. (Copy of test report available).
Care Please see www.kvadrat.dk/care-and-maintenance.

Campas 300 by Kvadrat Finn Sködt

Application Curtains, panel curtains.
Description 100% Trevira CS. Width app. 124 inches (315 cm). Weight app. 820 g/lin.m. Piece dyed. Colour differences may occur.
Lightfastness (ISO) 5-7. Light transmission (DIN EN 410) 0.02-30%. Sound absorption (EN ISO 354) 0.50/Class D (flat), 0.70/Class C (waved). Airflow 974 Pa s/m. Flame resistance: BS 5867 part 2 type B. DIN 4102 B1. EN 13773 class 1. EN 13501 B, s1, d0. IMO FTP Code 2010:Part 7. JIS L 1091 A-1D. NF P 92 507 M1. NFPA 701. SN 198 898 5.2. UNI 9177 Classe 1. (Copy of test report available).
Care Please see www.kvadrat.dk/care-and-maintenance.

Canvas 2 by Kvadrat Giulio Ridolfo Cat. C

Please see description on Black/White Card

Harald 3 by Kvadrat Raf Simons And Fanny Aronsen Cat. C

Please see description on Black/White Card

Moss by Sahco Vincent Van Duysen Cat. C

Please see description on Black/White Card

Relate by Kvadrat Patricia Urquiola Cat. B

Please see description on Black/White Card

Steelcut 2 by Kvadrat Frans Dijkmeijer and Giulio Ridolfo Cat. C

Please see description on Black/White Card

Twill Weave by Kvadrat Jonathan Olivares Cat. C

Please see description on Black/White Card

Zero by Sahco Cat. C

Please see description on Black/White Card

Coda 2 by Kvadrat Norway Says & Per Bjørnsen Cat. D

Application Offices, hotels, institutions, domestic use. Great durability.
Description 90% new wool, 10% nylon. Width app. 55 inches (140 cm). Weight app. 860 g/lin.m. Material dyed. Foreign fibres may occur in light colours. Colour differences may occur.
Abrasion: App. 100,000 rubs acc. to the Martindale method EN ISO 12947.
Lightfastness (ISO) 5-7. Pilling (EN ISO) 4. Fastness to rubbing (ISO) dry 4-5, wet 4. Airflow 200 Pa s/m. Flame resistance: AS/NZS 3837 Class 3. BS 5852 Crib 5 with treatment. BS 5852 part 1. EN 1021-1/2. IMO FTP Code 2010:Part 8. NF D 60 013. NFPA 260. SN 198 898 5.3 with treatment. UNI 9175 11M. US Cal. Bull. 117-2013. ÖNORM B1 / Q1. (Copy of test report available).
Care Please see www.kvadrat.dk/care-and-maintenance

Pilot by Kvadrat Raf Simons Cat. D

Application Offices, hotels, institutions, domestic use. Great wearability.
Description 82% new wool, worsted, 10% polyester, 8% nylon. Width 55 inches (140 cm). Weight app. 770 g/lin.m. Yarn dyed. Colour differences may occur.
Abrasion: App. 70,000 rubs acc. to the Martindale method EN ISO 12947.
Lightfastness (ISO) 7. Pilling (EN ISO) 4. Fastness to rubbing (ISO) dry 4-5, wet 3-5. Flame resistance: AS/NZS 3837 Class 2. BS 5852 Crib 5 with treatment. BS 5852 part 1. EN 1021-1/2. IMO FTP Code 2010:Part 8. NF D 60 013. UNI 9175 11M. US Cal. Bull. 117-2013. ÖNORM B1 / Q1. (Copy of test report available).
Care Please see www.kvadrat.dk/care-and-maintenance.

San by Kvadrat Louise Sigvardt Cat. C

Application Offices, hotels, institutions, domestic use. Great durability.
Description 92% new wool, worsted, 8% nylon. Width app. 55 inches (140 cm). Weight app. 370 g/lin.m. Yarn dyed. Foreign fibres may occur in light colours. Colour differences may occur.
Abrasion: App. 60,000 rubs acc. to the Martindale method EN ISO 12947.
Lightfastness (ISO) 5-7. Pilling (EN ISO) 3-4. Fastness to rubbing (ISO) dry 4-5, wet 3-5. Sound absorption (EN ISO 354) 0.50/Class D (flat), 0.75/Class C (waved). Airflow 314 Pa s/m. Flame resistance: AS/NZS 3837 Class 2. BS 5852 Crib 5 with treatment. BS 5852 part 1. EN 1021-1/2. IMO FTP Code 2010:Part 8. NF D 60 013. SN 198 898 5.3 with treatment. UNI 9175 11M. US Cal. Bull. 117-2013. (Copy of test report available).
Care Please see www.kvadrat.dk/care-and-maintenance.

Fuse by Kvadrat Raf Simons Cat. D

Please see description on Black/White Card

Hero by Kvadrat Patricia Urquiola Cat. B

Please see description on Black/White Card

Raas by Kvadrat Doshi Levien Cat. C

Please see description on Black/White Card

Savanna by Kvadrat Aggebo & Henriksen Cat. B

Please see description on Black/White Card

Steelcut Trio 3 by Kvadrat Frans Dijkmeijer and Giulio Ridolfo Cat. C

Please see description on Black/White Card

Vidar 4 by Kvadrat Raf Simons And Fanny Aronsen Cat. C

Please see description on Black/White Card