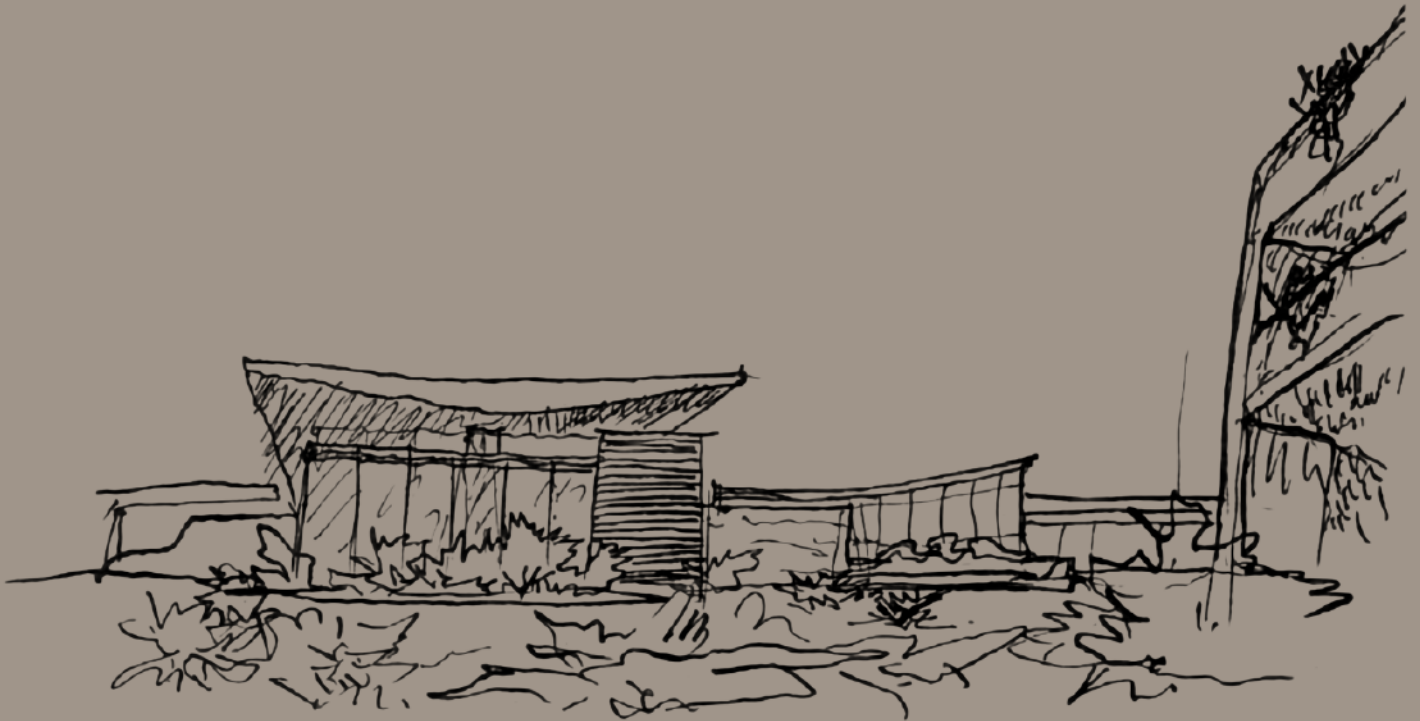


la Saracena

slow living





GTV unveils a 360° furnishing project

Characterised by a lifestyle that encourages people to enjoy every moment of everyday life, the new GTV collection represents the constant search for a balance between the increasingly fast-paced modern world and the natural, calmer state of things:

- a hymn to “slow living”.





location:

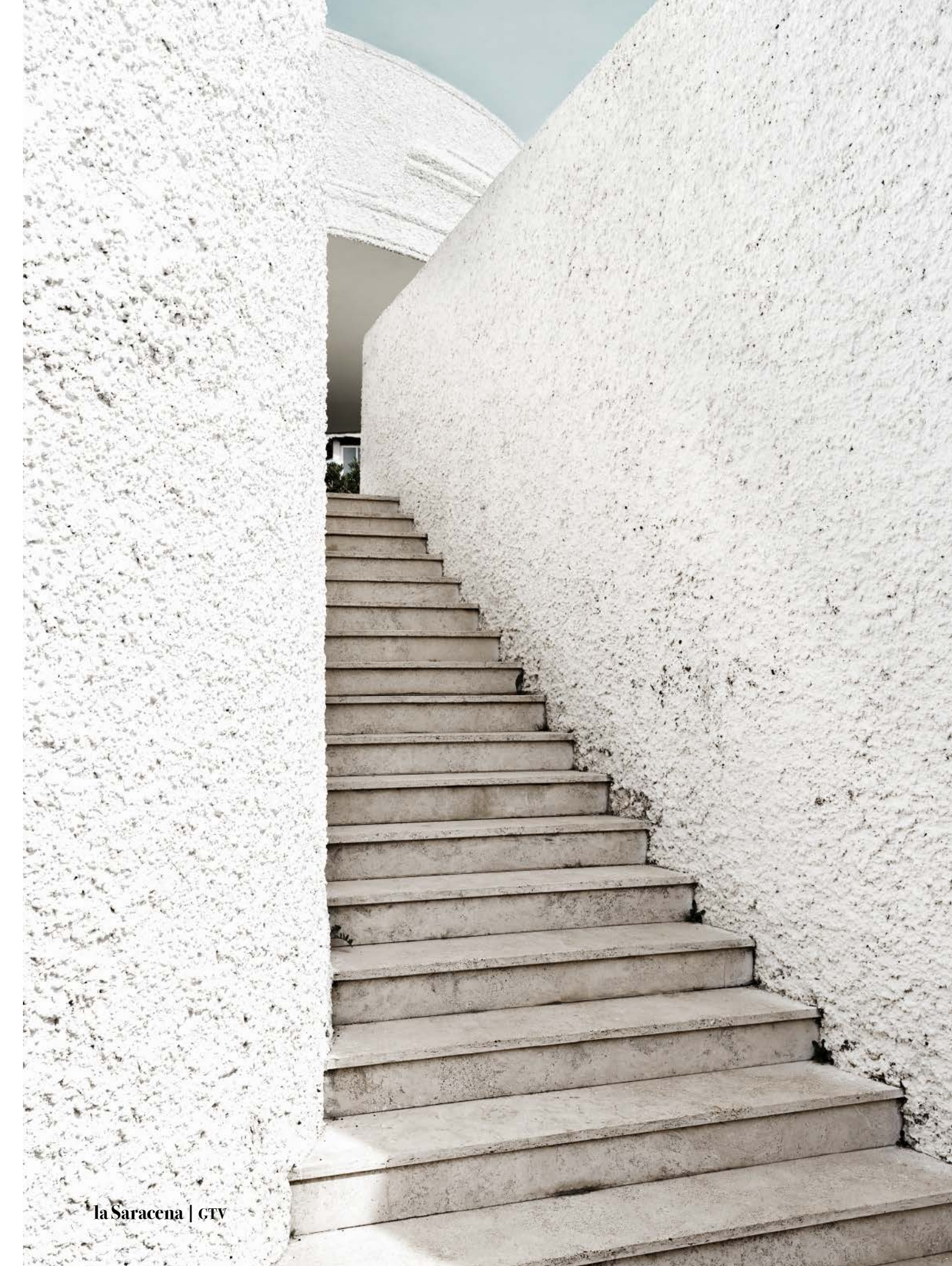
Villa "la Saracena", Santa Marinella (RM)

latitude:

42° 01' 51.4" N

longitude:

11° 50' 03.5" E

















history

In the mid-fifties, during the ecstasy of economic boom, parties, sports cars, stardom and paparazzi: Santa Marinella was known as "the pearl of Tirreno" and challenged Saint Tropez and Sanremo for the status of the favourite place for those belonging to international high society. This was the "buen retiro" of the Bergman-Rossellini couple, who hosted Gregory Peck, whilst on a break from filming "Vacanze Romane", Rock Hudson, Marlon Brando, Federico Fellini and Dino Risi.



1955

Arch. Luigi Moretti was asked to interpret in his own way the idea of a holiday home.

→ a virtuosic balance
between open and closed,
in which the forms become
the instrument of a precise
emotional intent.



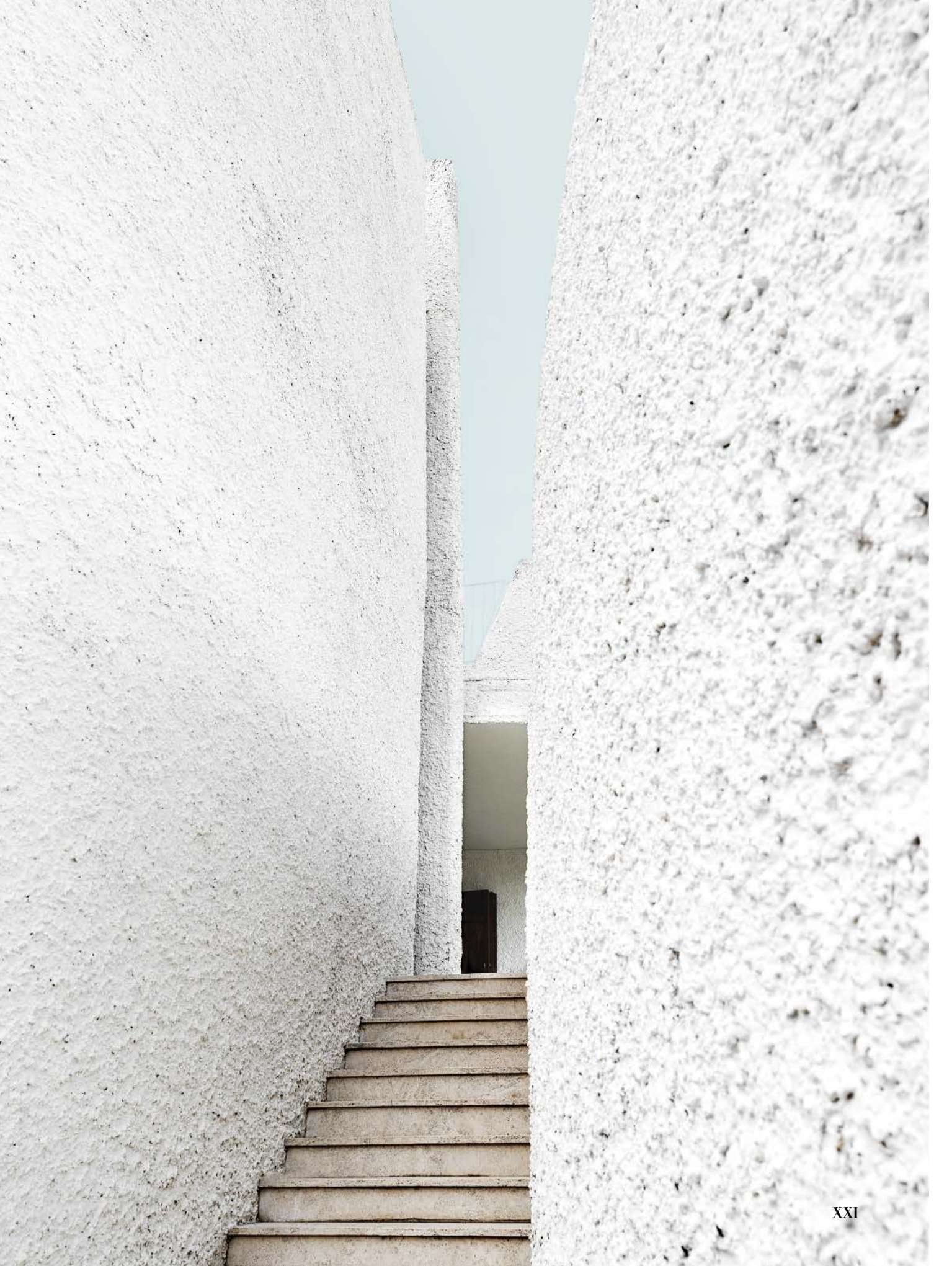






**a minimal gash
in the concrete,
a couple of meters
above the ground.**

















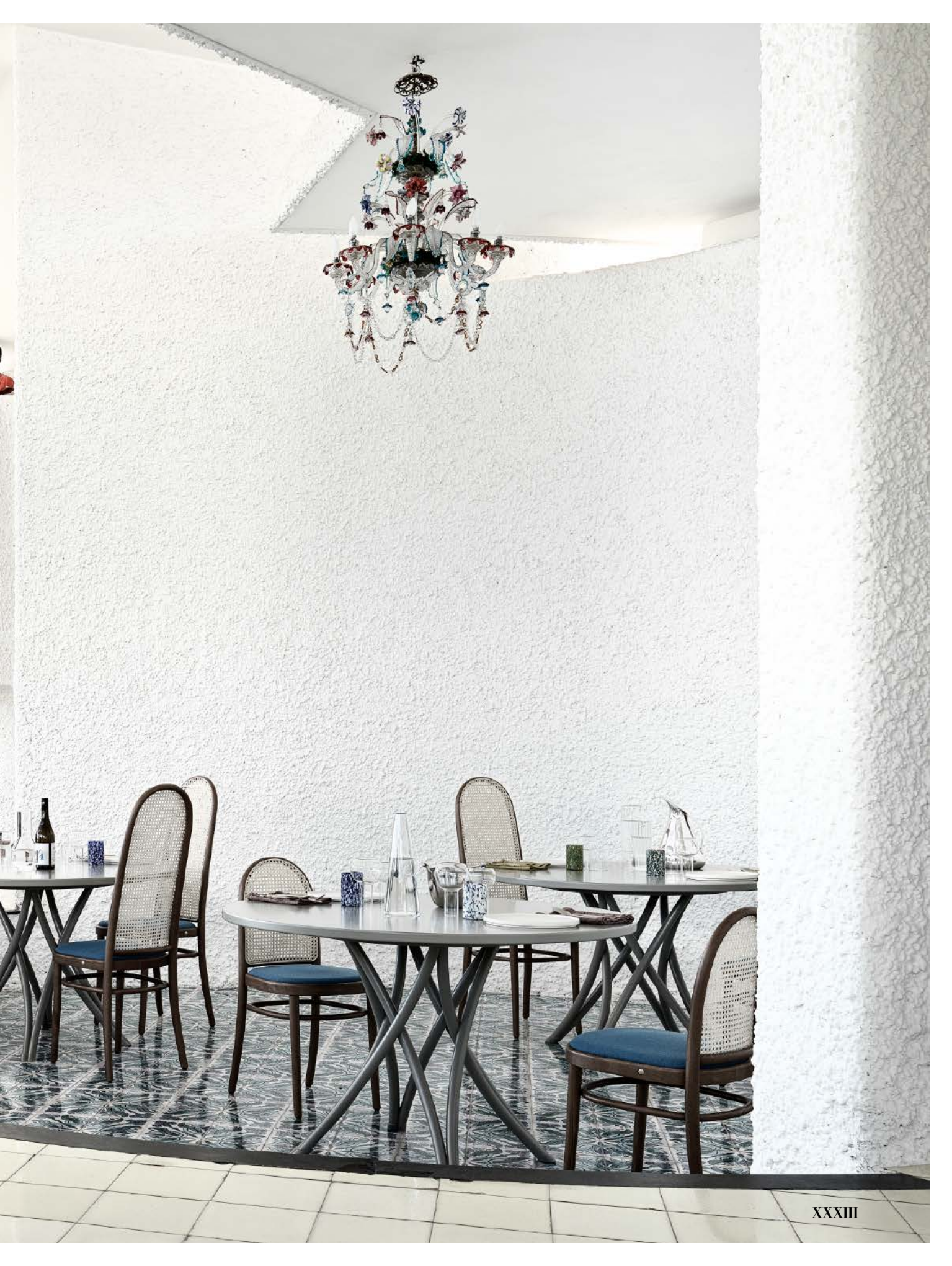


















**coffee, scent of citrus fruits
and a look towards the sea.**







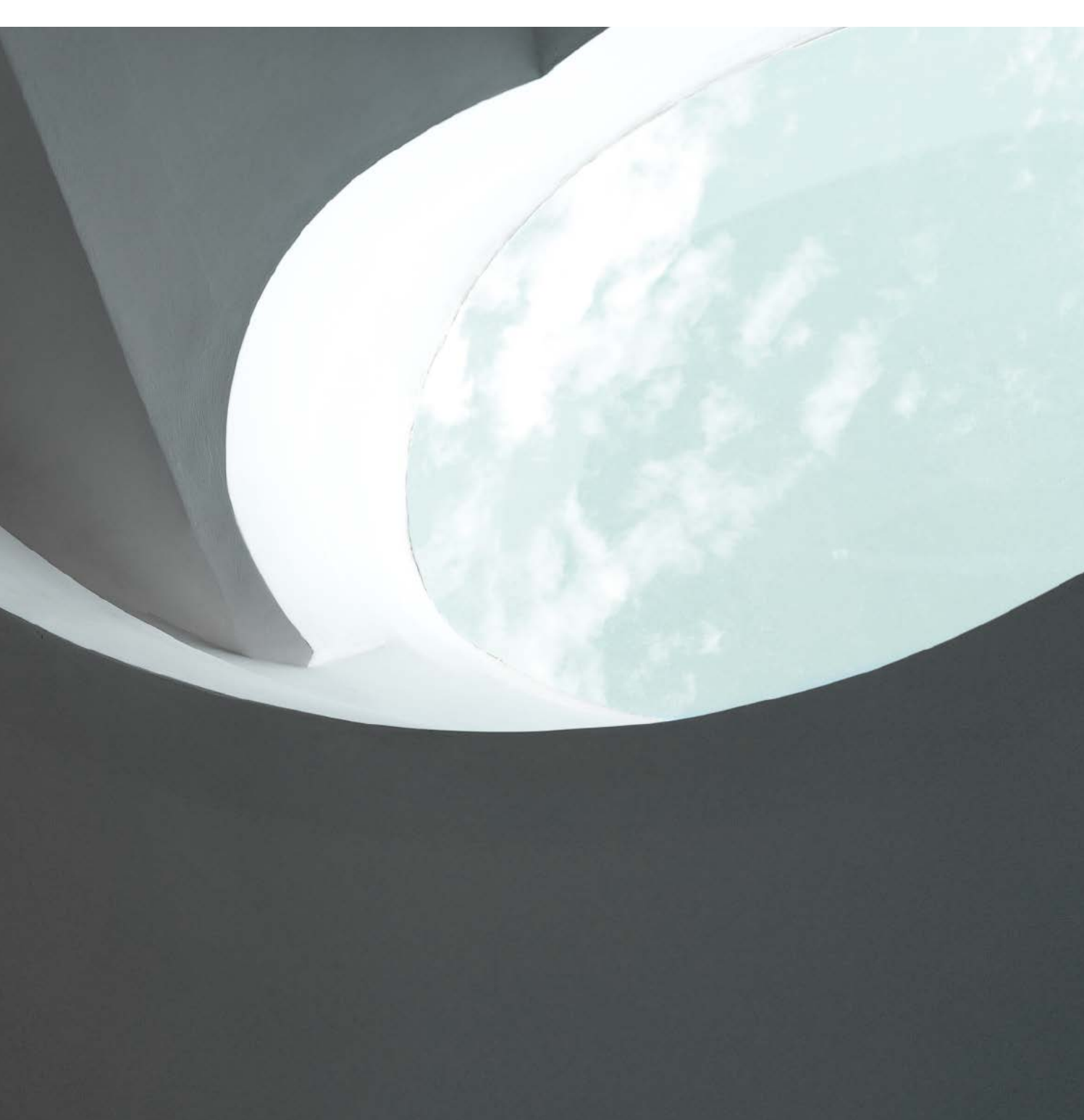
mediterranean flavor of timeless charm.

Filtered by the lens of a camera, the gaze of a photographer observes the work of a writer with whom she finds herself sharing the spaces of this villa.















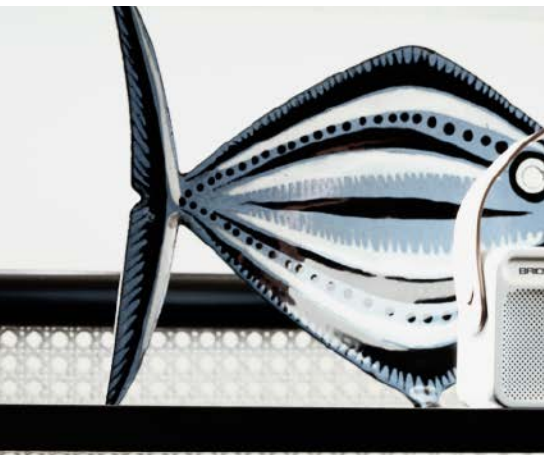
a dialogue between
people and places,

strange gazes that observe themselves
from afar and cross paths without ever
seeing each other.



the tower that rises high above the villa, like a
viewpoint observes the landscape through narrow
slits into the structure.











a notebook, a typewriter,
a presence that comes alive in absence.







large windows flood
the bedrooms with light.



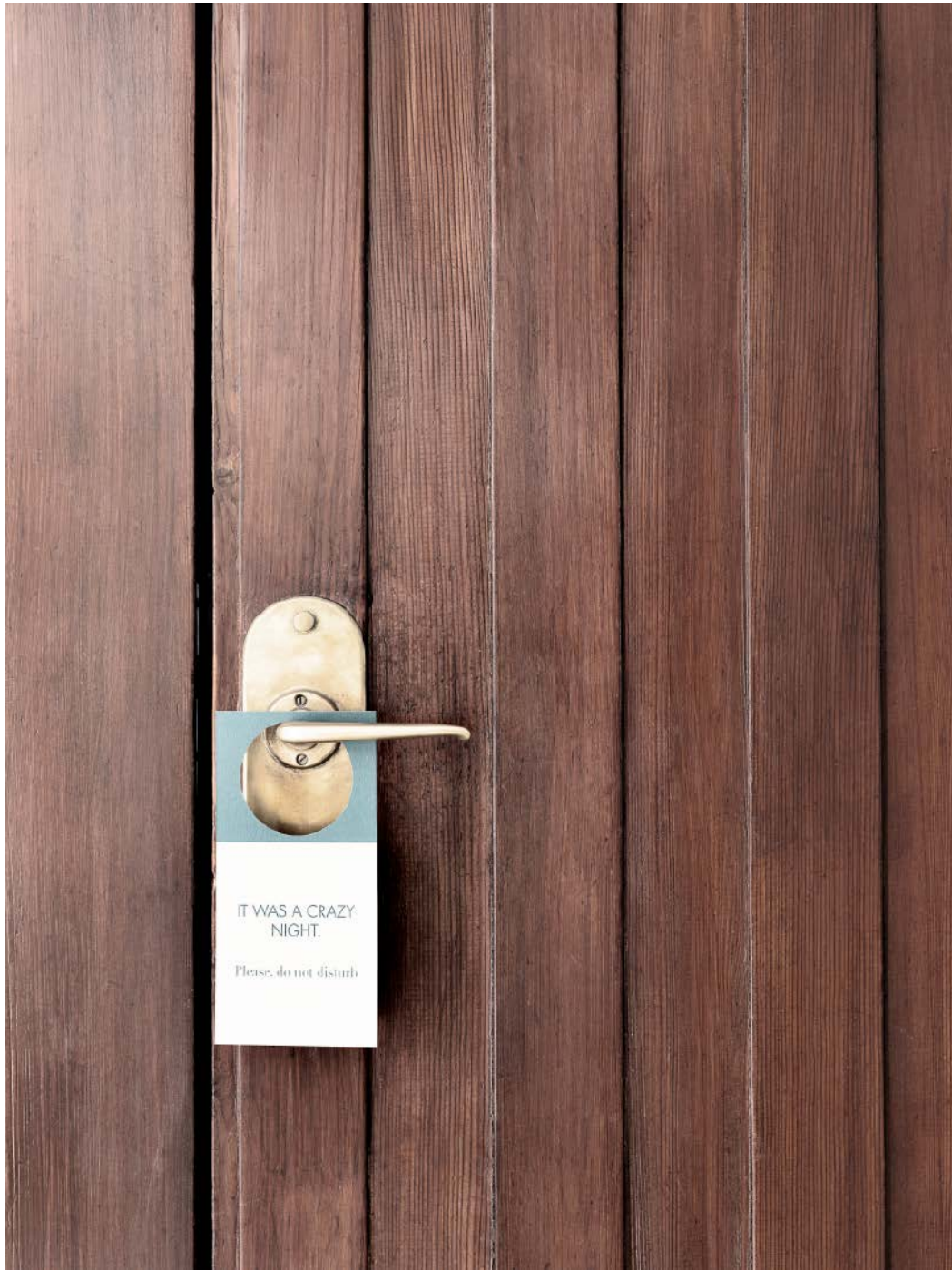
































APERITIVO COCKTAILS

Bellini
Aperol, Prosecco, soda

Mojito
Rum, lime, raw sugar, mint, soda

Daiquiri
Rum, lime juice, simple syrup

Moscow Mule
Vodka, lime juice, ginger beer

Long Island Ice Tea
White Rum, Gin, Tequila, Vodka, Triple Sec, Cola

Bloody Mary
Vodka, Tomato juice, lemon juice, Worcestershire sauce, hot sauce











APERITIVO COCKTAIL

Bellini

Aperol, Prosecco, soda

Mojito

Rum, lime, raw sugar, mint, soda

Daiquiri

Rum, lime juice, raw sugar

Moscow Mule

Vodka, lime juice, Orange beer

Long Island Ice Tea

White Rum, Gin, Tequila, Vodka, Triple sec, Cola

Bloody Mary

Vodka, Tomato juice, lemon juice, lemon juice, Tabasco









Art Direction:

R+W

Graphic Project:

Country Lab | Gianfranco Martorella

Project Coordination:

Caterina Moiso
Giulia Cabrini

Photo:

Gionata Xerra Studio

Concept e styling:

Simona Silenzi Studio

Ha collaborato:

Gaia Marchesini, Giordano Sarno

Photo assistant:

Leonardo Duggento
Marco Manigrasso

Post produzione immagini:

Pierpaolo Mazzola

